

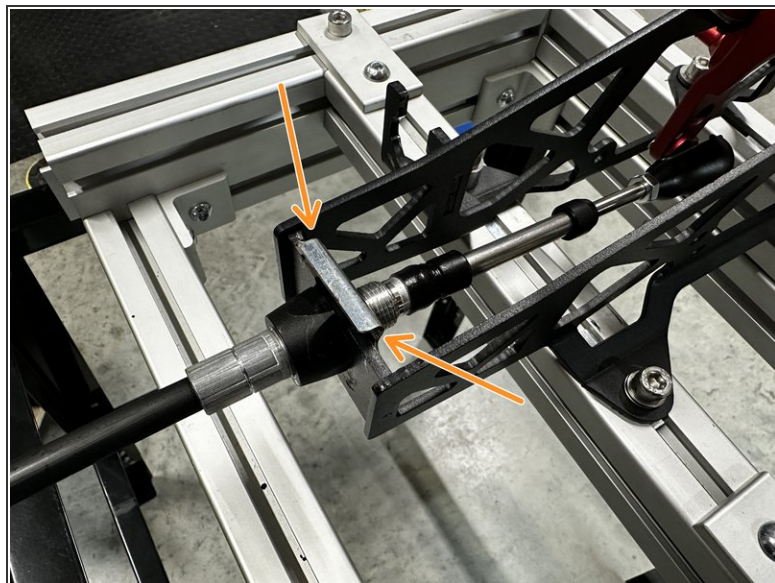


Hybrid Racing Performance Shifter Cables 04-08 Acura TL & 03-07 Accord V6

Written By: Hybrid Racing

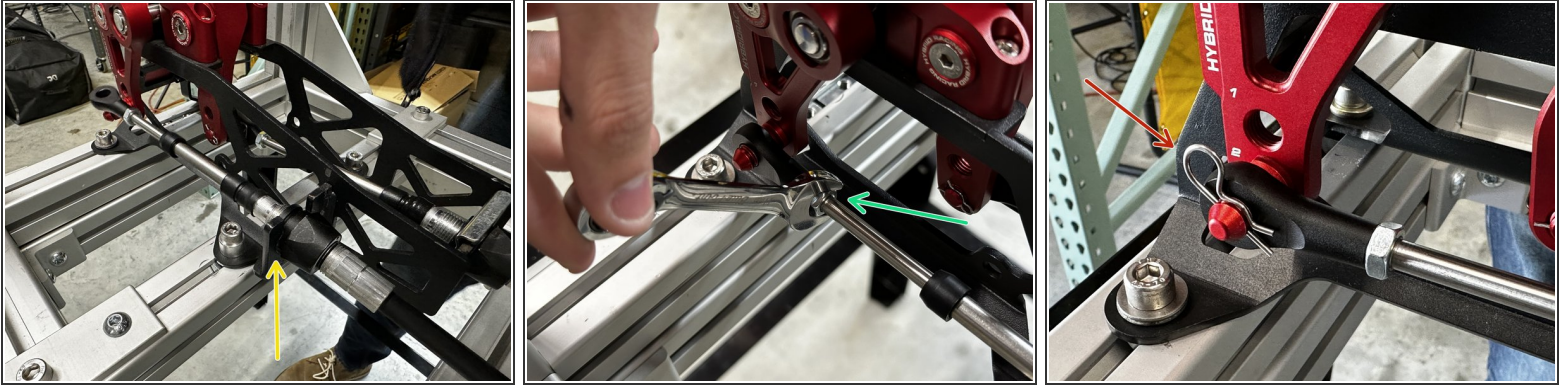


Step 1 — Shifter Cable Install



- Install the Hybrid Racing shifter cables onto the shifter.
- The Hybrid Racing adjustable shifter is shown in the images.
- Install the Front/Back cable by sliding it onto the lower retaining ball. It should clip into place and not slide off.
- Once installed, use the supplied C clip and secure the shifter cables to the shifter base.

Step 2 — Secure Cables



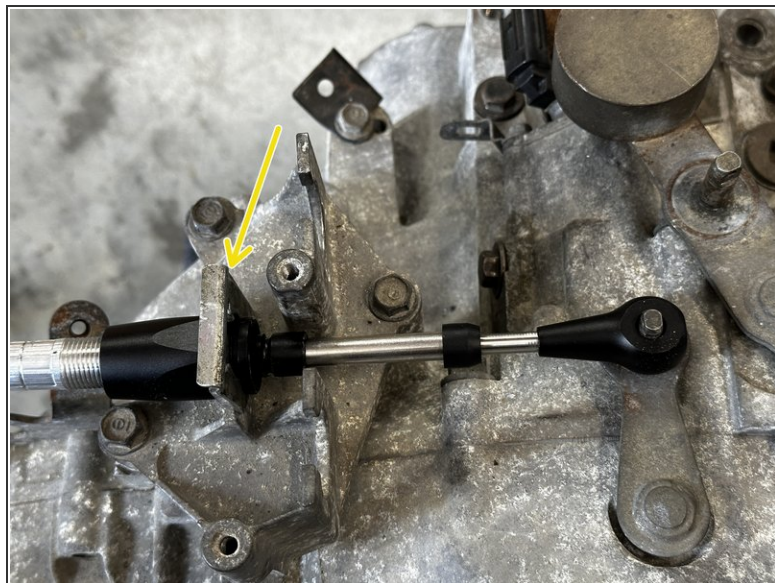
- Use the same technique from step 1 to install the Left/Right cable into the shifter base.
- Once installed, you may notice that the shifter cable end link's natural state is not aligned with the shifter pin.
- Align the shifter cable end link by loosening and adjusting the retaining nut. Install the shifter cable and tighten the retaining nut.
- Use the supplied retaining clip to secure the shifter cable to the shifter.

Step 3 — Secure Cables



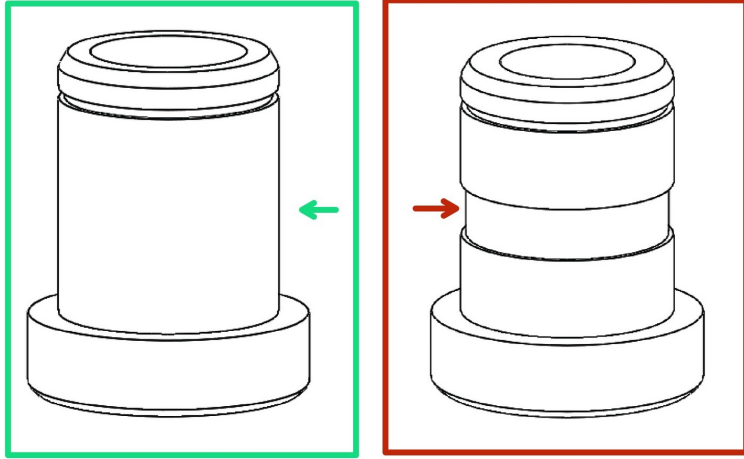
- Be sure both cables are secure before moving on. The process may be different when installing them into a car.

Step 4 — Cable to transmission



- Install the shifter cable with the smaller end link on the transmission by sliding it through the cable mounting bracket.
- Slide the end link onto the gear selector.
- Secure the shifter cable by reusing the OEM shifter cable clips. If you do not have these clips you will need to purchase them separately.

Step 5 — Choose the correct insert



- Choose the correct bearing insert.
- Note the insert that has a groove machined in the center.
- The insert with the groove is used ONLY on the 07-08 TL Type-S. It WILL NOT fit on any other application.
- The insert without the center groove is used ONLY on the 03-07 Honda Accord V6, and the 04-06 Acura TL Base 6spd.

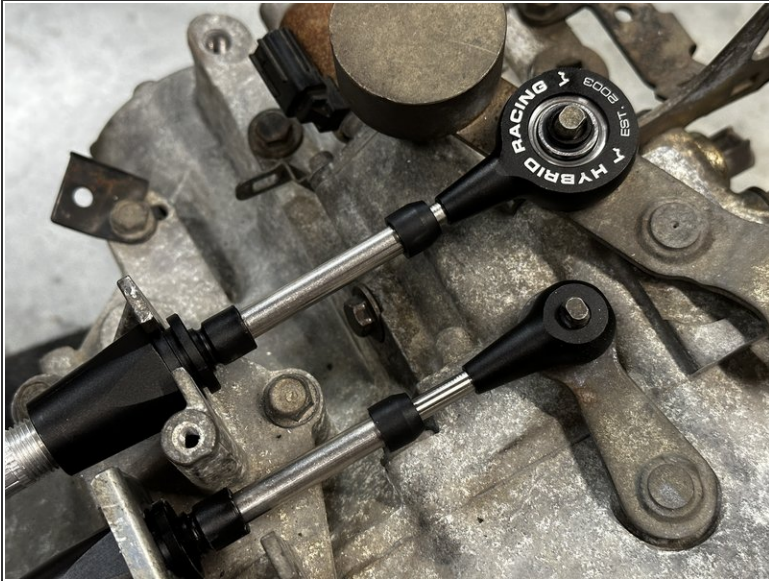
Step 6 — Bushing Insert



- The TOP of the bushing contains the Hybrid Racing logo etching. This faces UP.
- Install the correct bushing insert and secure it with the included retaining ring. Please refer to step 5 and make sure you use the correct part.
- ① The base of the bearing insert says BOTTOM. This part should sit flat against the transmission.

⚠ Failure to install this part correctly can result in a damaged or bent cable core caused by misalignment.

Step 7 — Secure Cables to Transmission



- Note the orientation of the shifter cable end link. Make sure the Hybrid Racing logo is facing up and the insert is flat against the gear selector.