



Hybrid Racing Short Shifter 97-01 Honda Prelude

Written By: Hybrid Racing

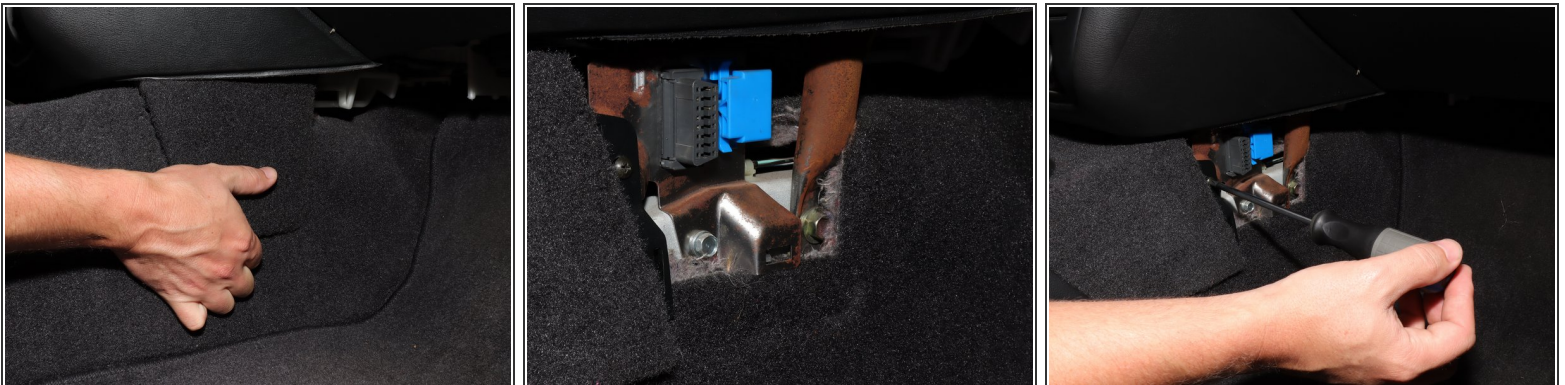


Step 1 — Console Removal



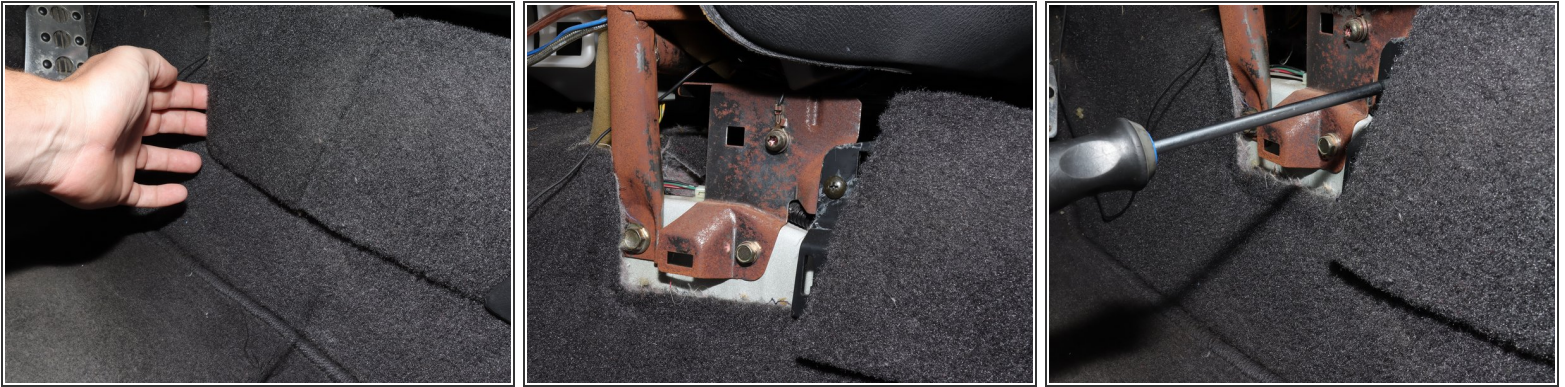
- Begin by sliding the shift boot downward and unclipping it from the knob.
- Remove the shift knob.

Step 2 — Console Removal



- On the right hand side kick panel, remove the cover revealing the console bracket.
- Remove the phillips screw.

Step 3



- On the left-hand side of the lower kick panel, remove the panel to reveal the mounting bracket.
- Remove the Phillips screw.

Step 4 — Console Removal



- On the rear section of the console, locate the 4 mounting screws.
- There are 2 on each side. Remove all of them.

Step 5 — Console Removal



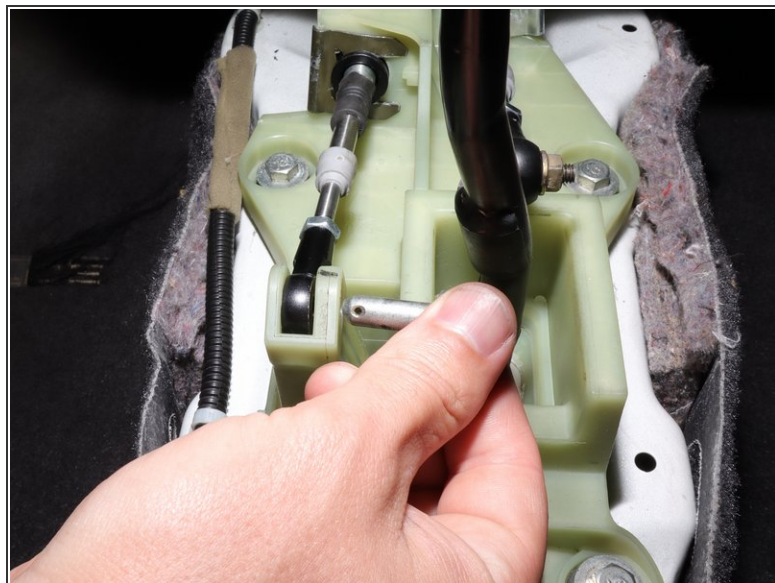
- On the upper section of the center console, locate the mounting screws.
- There should be one on each side. Remove them.
- Lift the e-brake handle to the locked position.

Step 6 — Console Removal



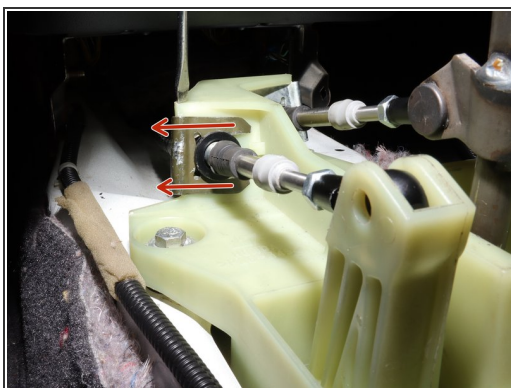
- Remove the console and set aside.
- Be sure to disconnect any electrical connectors.

Step 7 — Shifter Removal



- Remove the LH side shifter cable from the shifter.
- Remove the clip, then slide the pin out.

Step 8 — Shifter Removal



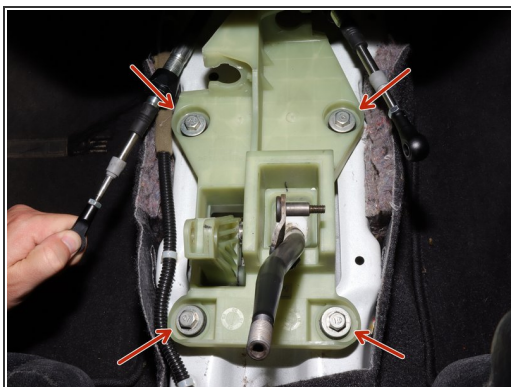
- Remove the spring clip holding the cable in place.
- Once the clip is removed, push the cable inward and slide it away from the shifter.

Step 9 — Shifter Removal



- Remove the RH side shifter cable from the shift rod. You may need to use a 10mm socket.
- Remove the spring clip, and like the previous side, push the cable in and slide it away from the shifter.

Step 10 — Shifter Removal



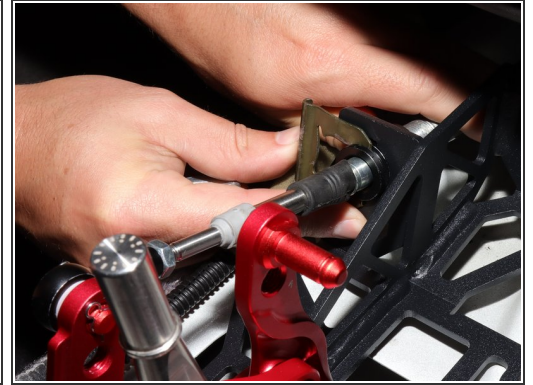
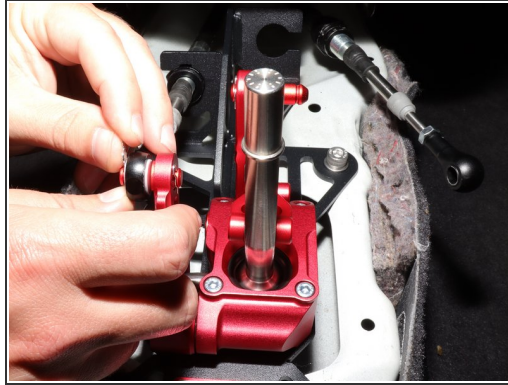
- Remove the four shifter mounting bolts.
- Remove the shifter from the inside of the car.

Step 11 — Shifter Install



- Install the new Hybrid Racing shifter using the supplied hardware.
- Once all bolts are in place, use a 6MM Allen to tighten them down.

Step 12 — Shifter Install



- Install the LH side cable by inserting it into the shifter, and slide the end link onto the shifter.
 - Use the supplied washers and cotter pin.
 - Install the spring C clip to hold the shifter cable to the shifter.
- i** Position 2 is the shortest setting
- i** Position 1 is the longest setting.

Step 13 — Shifter Install

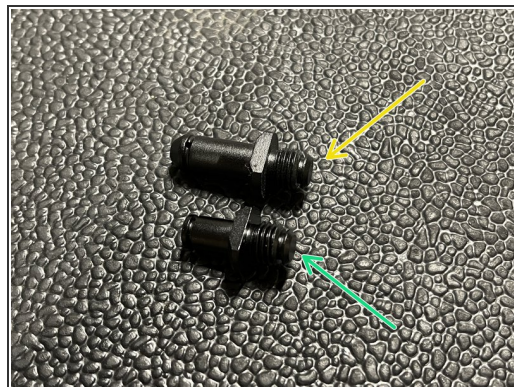


- Insert the RH side shifter cable into the shifter and slide the end link onto the shifter arm.
- Use the supplied washers and cotter pin to secure it.
- Finally, install the spring C clip to hold the shifter cable in place.
- For the 2003 Acura CL Type-S, see steps 14 & 15.

i Position 2 is the shortest setting

i Position 1 is the longest setting

Step 14 — 2003 Acura CL Type-S Shifter Cable



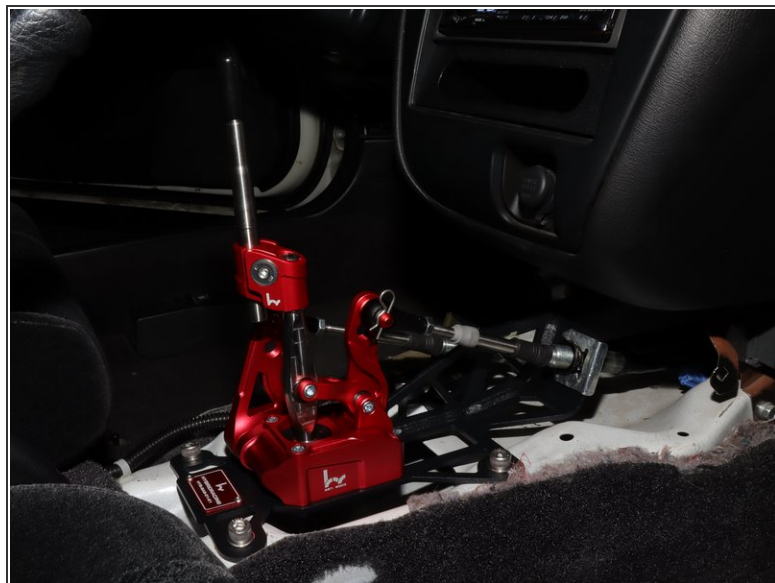
- If you are installing this in a 2003 Acura CL Type-S chassis, you must change the shifter cable pin on the Hybrid Racing shifter.
- The shifter is assembled with the larger pin for the Honda Accord and Prelude. If you try to install this in the CL Type-S, you'll notice the cable pin is too large.
- Included in the hardware bag, there will be an extra cable pin. This is smaller and required only for the 2003 Acura CL Type-S.
- The Honda Accord/Prelude/Insight pin is larger and longer.
- The Acura CL Type-S pin is shorter and smaller in diameter.

Step 15 — 2003 Acura CL Type-S Shifter Cable



- ❗ Remove the retaining pin and use a 12mm wrench to loosen the pin.
- Install the smaller pin for the CL Type-S and tighten with a 12mm wrench.
- Install the retaining clip.
- You can now continue with the installation based on the car you have.

Step 16



- Install the shifter offset. Be sure to adjust it according to your preference.
- The rod can be raised or lowered, the offset can swivel 360*.

⚠ Be sure to check for interference between the offset/rod and shifter base as it is possible for it to hit depending on how you have adjusted it.

Step 17 — Install Complete!



⚠ Please note that in the shortest setting, the shifter arm may contact the shift boot.

ⓘ If it does, some trimming of the shift boot may be necessary. Alternatively, you can remove the shift boot if you prefer to leave the shifter assembly exposed.

