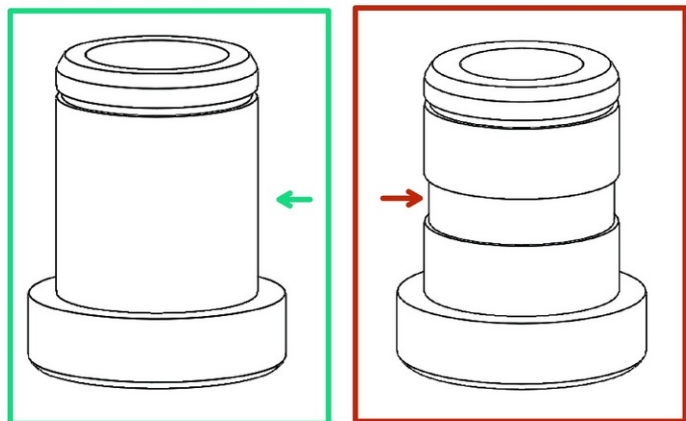




Written By: Hybrid Racing

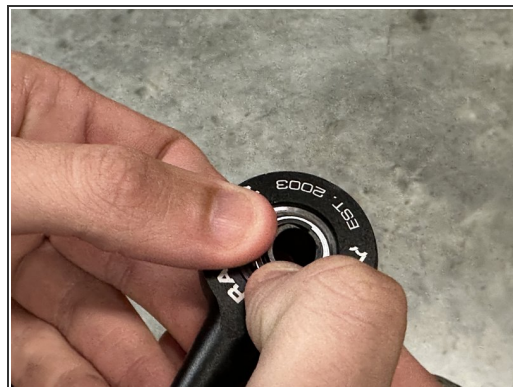


Step 1 — Choose the correct insert



- Please make a note of which insert to use on the shifter cable end link containing the metal spherical bearing.
- The insert that is smooth and does NOT have the machined groove should be used only on the 07-11 Civic R18 NON-Si model.
- The insert with the machined groove is for the 2006 model year Civic R18 NON-Si.

Step 2 — Bearing Insert



- ✦ The Hybrid Racing logo should always face UP when installed on the transmission.
- i The bottom of the bearing insert should sit flat on the transmission. Install the bushing correctly and then install the retaining clip on the top.
- ⚠ If this is installed wrong, it can bend or break the shifter cable as it won't sit flat on the gear selector.