



Hybrid Racing Performanec Shifter Cables 17-21 Civic Type R

Follow this guide to gain insight on how to install your Hybrid Racing shifter cables into the 2017-2021 Honda Civic Type-R.

Written By: David Cordell



INTRODUCTION

Important!! Please read the entire install guide twice before starting your installation. No really, it's a good idea to read it twice before you begin so everything goes smooth.



TOOLS:

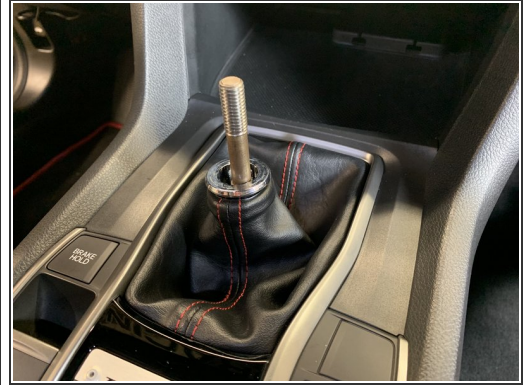
- [5mm Allen wrench](#) (1)
- [10mm socket](#) (1)
- [#2 Phillips head screwdriver](#) (1)
- [14mm Open End Wrench](#) (1)
- [1/4" or 3/8" Ratchet](#) (1)
- [Plastic Panel Removal Tools](#) (1)
- [6"-10" Ratchet Extension](#) (1)
- [Medium Size Channellock Pliers](#) (1)



PARTS:

- [HYB-SAS-01-35](#) (1)

Step 1 — Shift Knob Removal



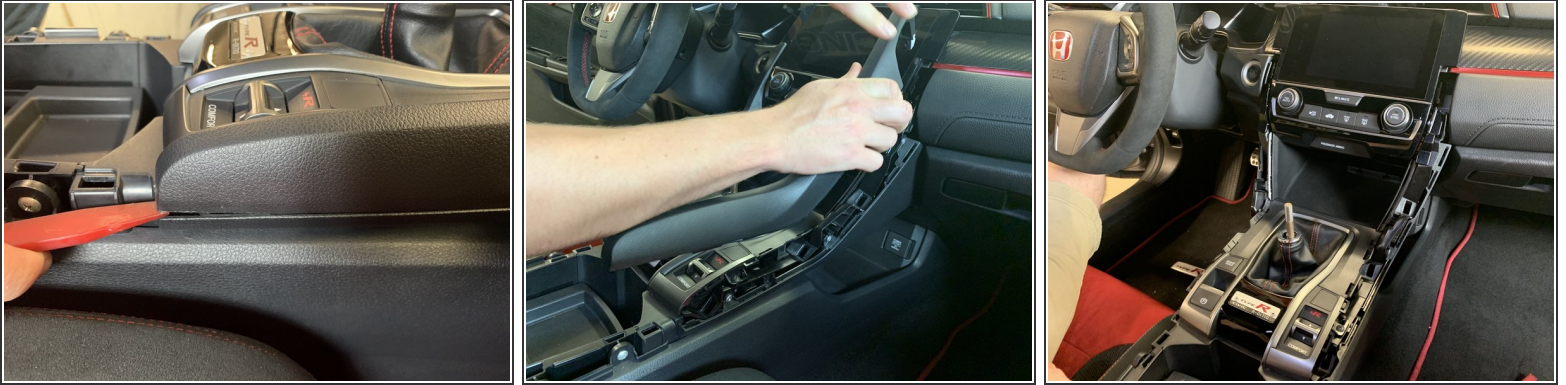
- Remove your shift knob.
- Remove the boot collar by pushing downward on the clip.
- Use a 14mm Open End Wrench to unscrew the threaded section of the collar. Some may require tools to remove, be careful not to damage the threads.

Step 2 — Console Removal



- Pull upwards on the side console pads and remove them.
- They aren't screwed or bolted into place so just pull up and they will pop out.

Step 3 — Console Removal



- Use a plastic panel tool to pry the upper console section. Once it pops up, grab the upper section and pull it towards you.
- These panels are held in with clips and do not require tools.
- Pop both left and right upper sections off.

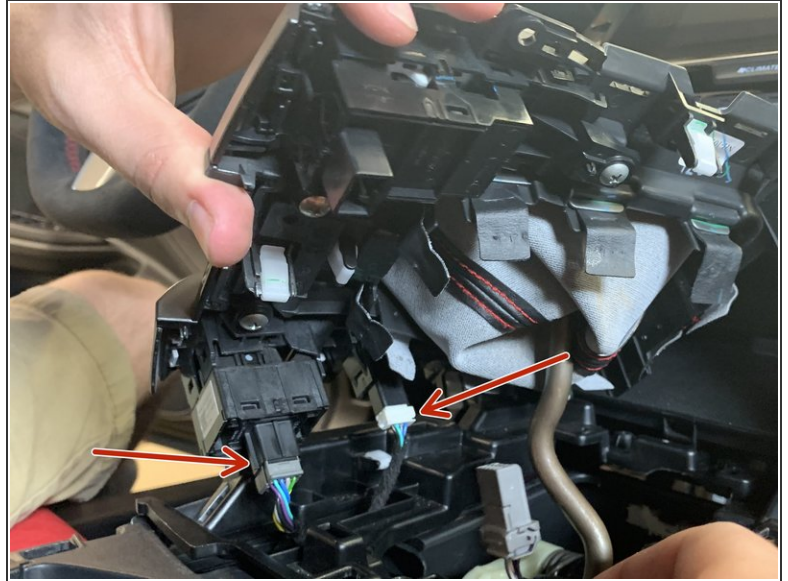
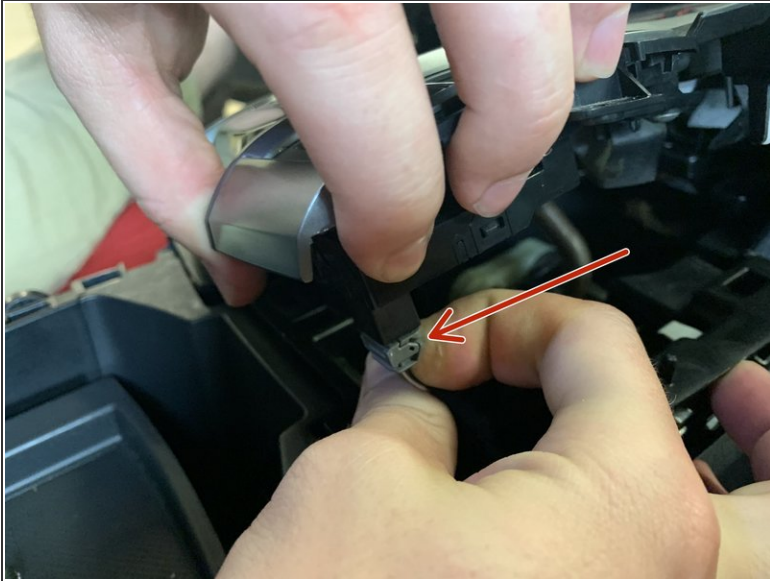
Step 4 — Remove the Console Cover



- Using a #2 phillips screwdriver, unscrew the two screws that hold the shift boot cover.
- Use your hands and pry the sides of the cover up and pop it off.

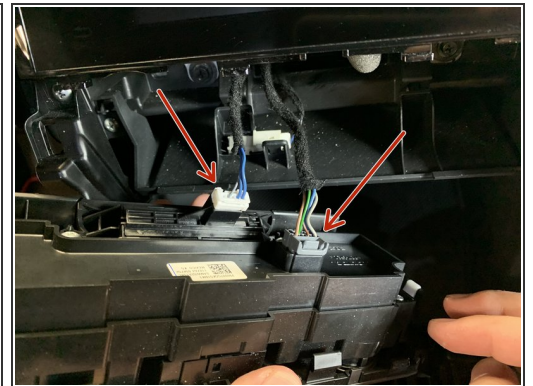
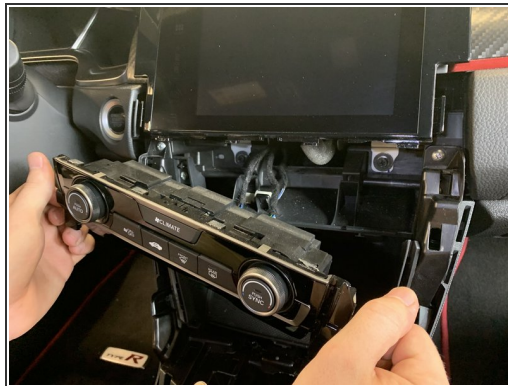
⚠ Don't pull on it too hard because there are electrical connectors holding it in place.

Step 5 — Unplug Drive Mode Harness



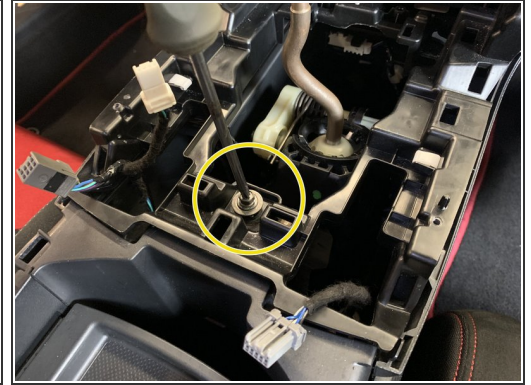
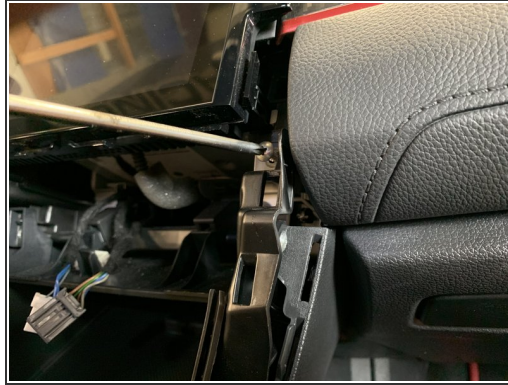
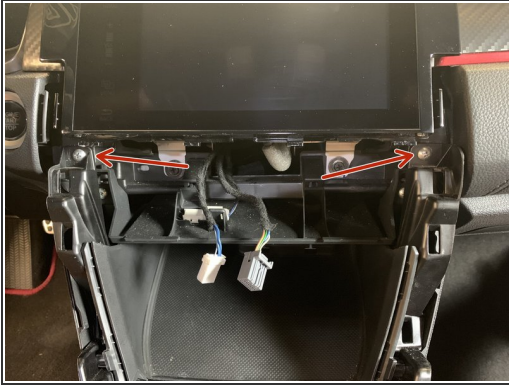
- Unplug the drive mode selector as well as the parking brake and brake hold button.
- ❗ Depending on the year/model you may have more or less buttons to unplug here.

Step 6 — Remove Climate Control



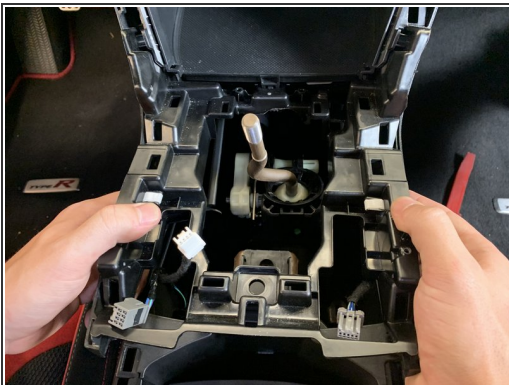
- Use your hands and pry the lower section of the climate control towards you.
- Once it pops out, grab it from the sides and pull a little more. It should pop out.
- Unplug the climate control and set it aside.

Step 7 — Remove the Upper Console



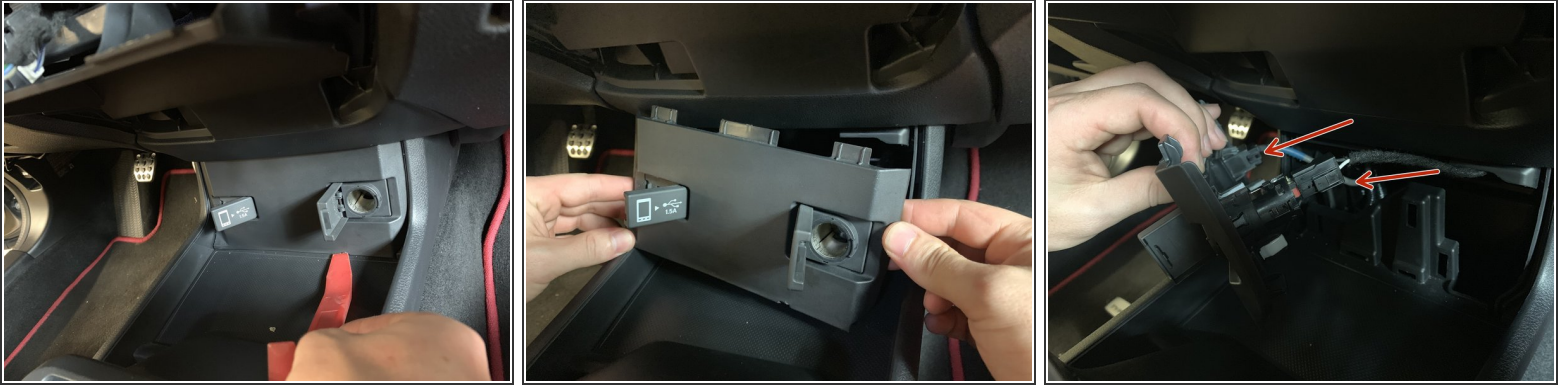
- Use a #2 Phillips screwdriver to remove the two upper console screws.
- Next, remove the center console screw.

Step 8 — Remove the Upper Console



- Use your hands and pop the sides of the console up. Once it is free, lift upwards and remove it completely.
- ⓘ You may need to put your shifter into 4th gear to clear the plastic cover.

Step 9 — Remove Front Console Cover



- Use a plastic panel pry tool on the lower section of the console cover.
- Unplug the 12v connector and the smartphone USB connector.

Step 10 — Remove the Rear Console Section



- Use a plastic panel pry tool to separate the rear section of the console.
- Once the cover comes off, unplug the keyless entry connector and remove the clip holding the harness in place.

Step 11 — Unbolt Center console



- Remove the two screws inside of the center console.

Step 12 — Disconnect Console Wiring Harness



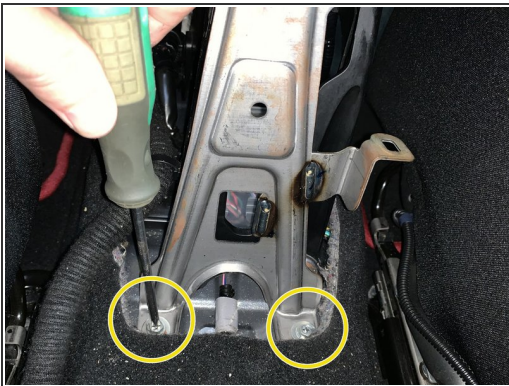
- Remove the console light as well as the lower USB connector.
- You will need to lift the console up and unplug it from the bottom.

Step 13 — Remove the Center Console



- Slide the entire console backwards a few inches to unclip it from the dashboard.
- Lift the rear section up and remove the entire console from the car.

Step 14 — Remove the OEM Shifter



- Remove the two bolts that hold the console bracket to the chassis.
- Remove the x4 10mm bolts on the base of the factory shifter.

Step 15 — Remove Wiring Harness



- Remove the clips that hold the wiring harness to the factory shifter.

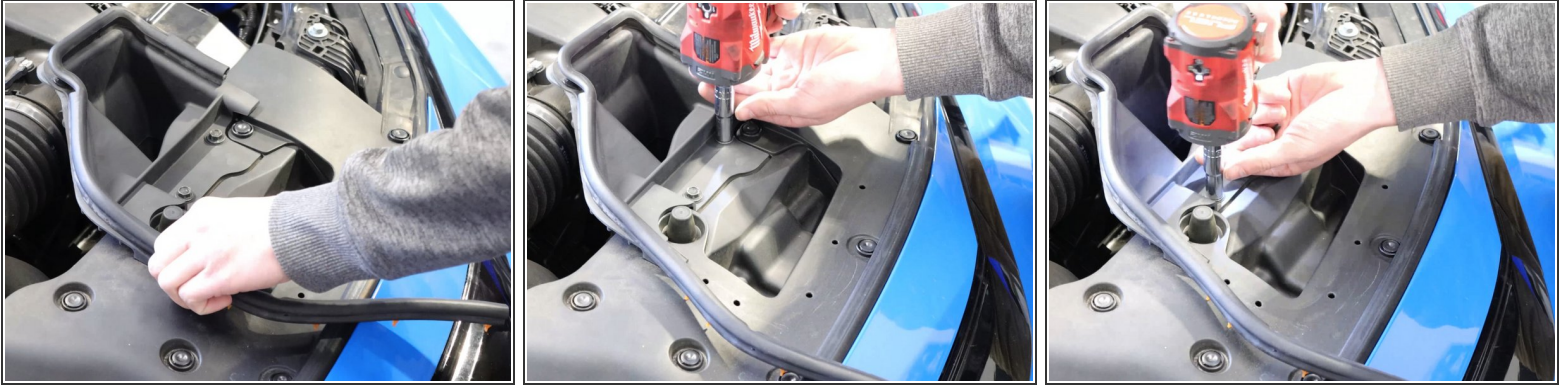
Step 16 — Disconnect Shifter Cables



⚠ Remove the cables from the factory shifter. This can be tricky so take one cable at a time. It spins and then slides upwards out of the shifter.

- Pull the LH side retaining ring and slide the cable off the pin.
- The lower cable retaining ring must be pulled apart and then you can slide the cable end link off the shifter ball.
- Remove the shifter cables from the shifter. If you are changing the shifter, now is the time to remove the shifter from the car.

Step 17 — Airbox removal



- Begin in the engine bay by removing the air intake seal. You will need to remove the airbox lid so remove this section to make gaining access to the tray easier.

Step 18 — Airbox Removal



- Remove the factory air intake tube clamp.
- Slide the tube off the side of the airbox lid.

Step 19 — Airbox Removal



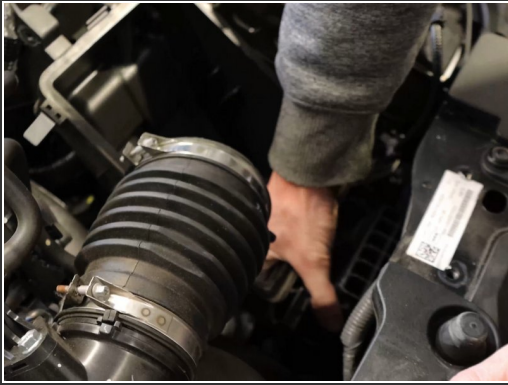
- Unclip the MAF wiring harness from the airbox lid and then unplug the MAF and set it aside.

Step 20 — Airbox Removal



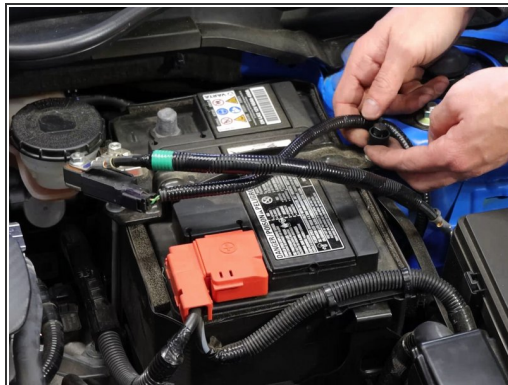
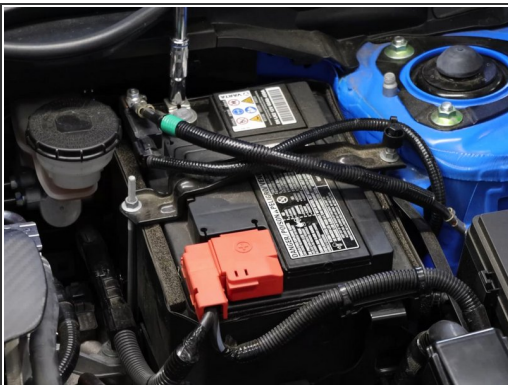
- Unclip the airbox lid and remove it from the engine bay.
- Remove the air filter from the lower tray.
- Unbolt the lower airbox and remove it.

Step 21 — Airbox Removal



- Grab the bottom airbox and pull upwards, the lower section is held in place by a grommet.

Step 22 — Battery Removal



- Remove the negative then positive terminal from the battery.

Step 23 — Battery Removal



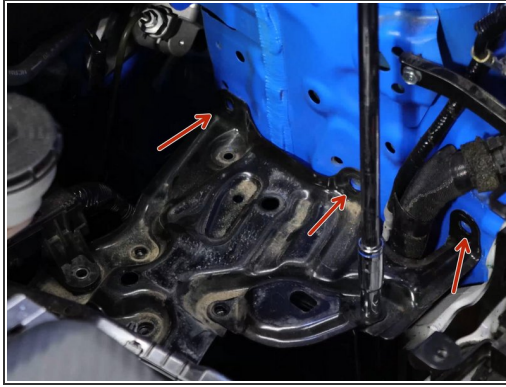
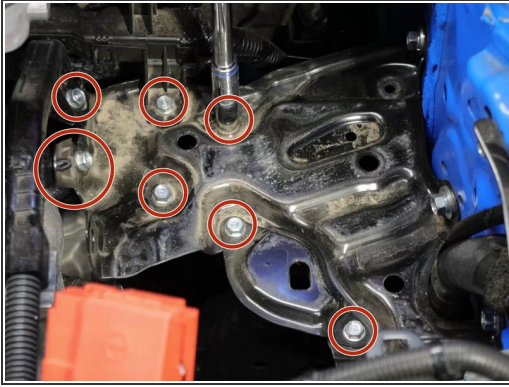
- Remove the battery tie-down bracket.

Step 24 — Battery Removal



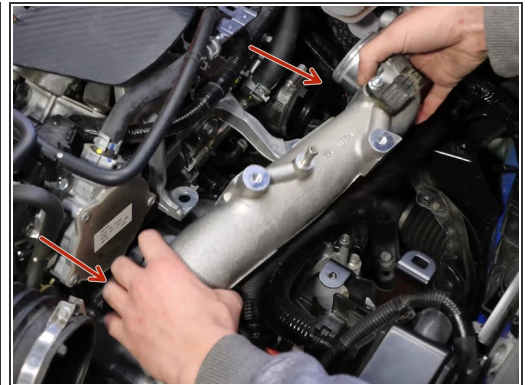
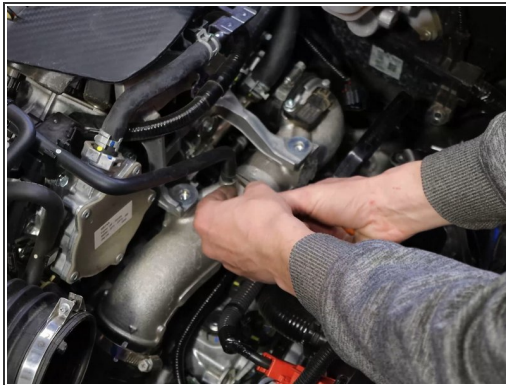
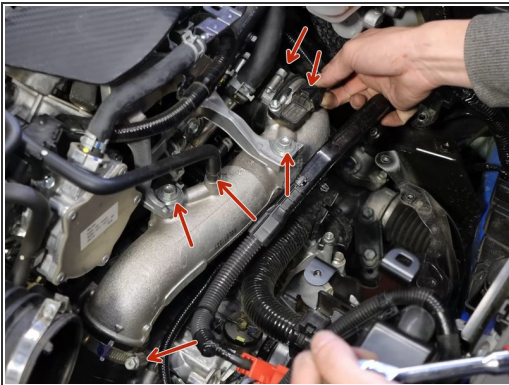
- Remove the battery, protective padding, and then plastic undertray.

Step 25 — Battery Tray Removal



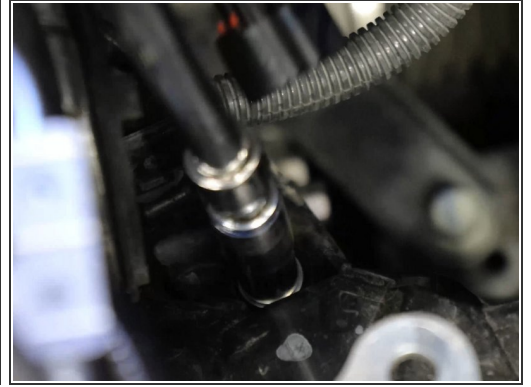
- Once the tray is out, you will need to remove a number of bolts and clips. Remove all of the parts that are bolted to the top and sides of the battery tray.
- Once all of the bolts are removed, you'll need to slide the tray towards the engine and lift it out of the engine bay.

Step 26 — Charge Pipe Removal



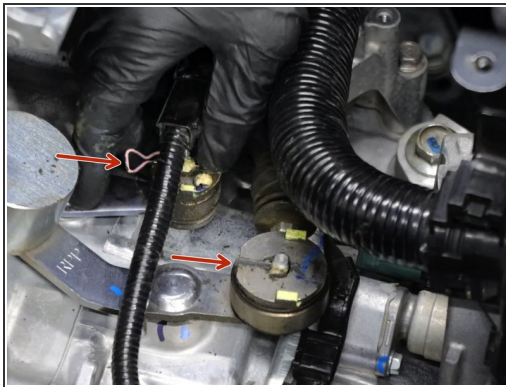
- Remove the intake charge pipe.
- There are a number of bolts, two hose clamps and an electronic connector to remove.
- Once those are removed, you can lift the pipe upwards and out of the engine bay.

Step 27 — Shifter Cable Removal



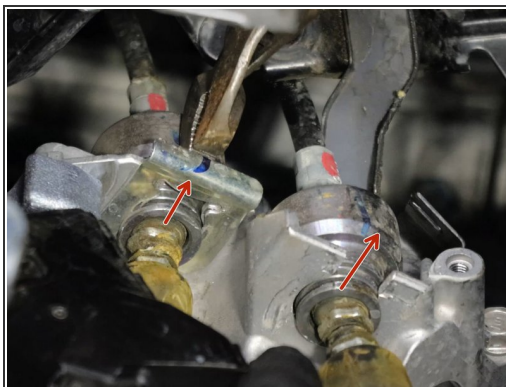
- Unbolt the wiring harness and move it out of the way, exposing the shifter cables and bracket.

Step 28 — Shifter Cable Removal



- Remove the shifter cable retaining clips.

Step 29 — Shifter Cable Removal



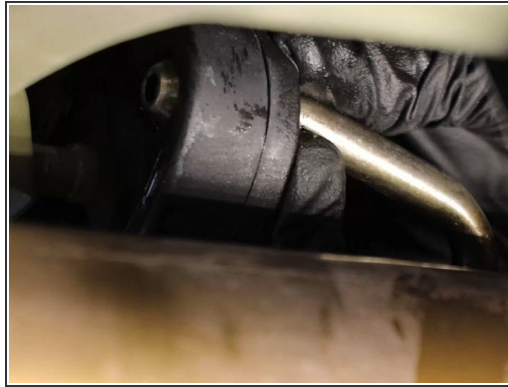
- Use a flat tipped screw driver and remove the shifter cable spring clips.
- Once they are removed, slide the cables out of the bracket.

Step 30 — Shifter Cable Removal



- Under the car, remove the plastic under tray to gain access to the heat shielding and exhaust.

Step 31 — Shifter Cable Removal



- Remove the three bolts on the exhaust flange and slide off the hanger bushing.
- Let the exhaust hang down.

Step 32 — Shifter Cable Removal



- Remove the heat shield bolts and slide it out of the way, exposing the shifter cables.

Step 33 — Shifter Cable Removal



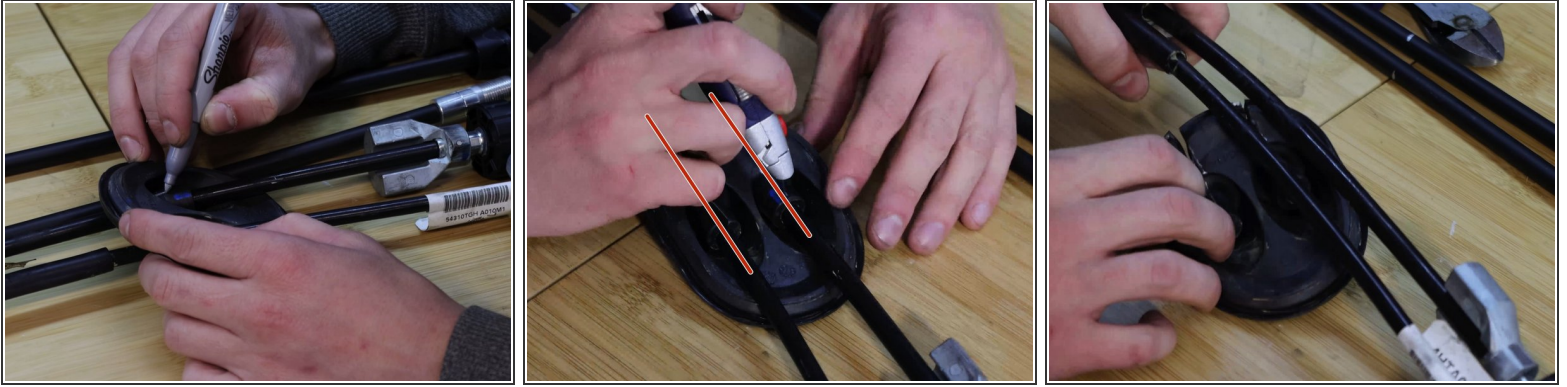
- Remove the nuts holding the shifter cable bracket to the frame.
- Pull the rubber seal down and remove the shifter cables from the cabin.

Step 34 — Shifter Cable Removal



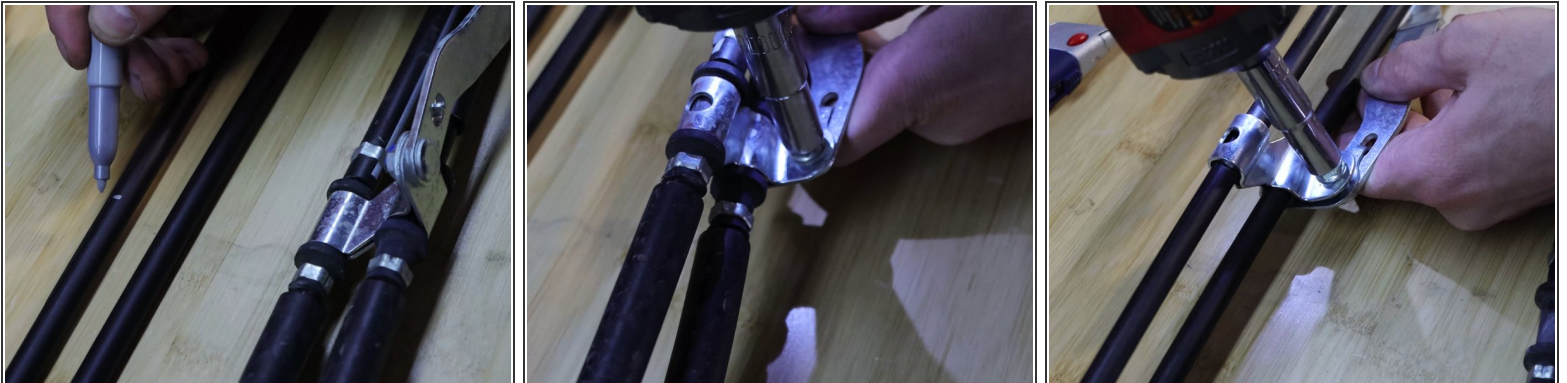
- Slide the shifter cables out of the car. Be sure nothing gets caught up in the engine bay.

Step 35 — Install Grommet



- You must transfer the rubber grommet from the factory cables to the new cables.
- Be sure to align the cables correctly and keep them positioned correctly.
- Slice the grommet down the center of each cable and peel it back.

Step 36 — Install cable bracket



- With the cables side by side, mark the position of the shifter cable bracket. You must transfer the cable bracket over to the new HR cables.
- If this bracket isn't in the correct location, you may need to slide it when installed into the car.

Step 37 — Install Shifter Cables



- Install the shifter cables in a similar way that they were removed. You can do this by sliding the cables into the engine bay from underneath the car.
- Then bend the cables upwards and slide them through the hole in the floor. You can now attach the bracket and slide the rubber grommet in place.

Step 38 — Install Shifter Cables



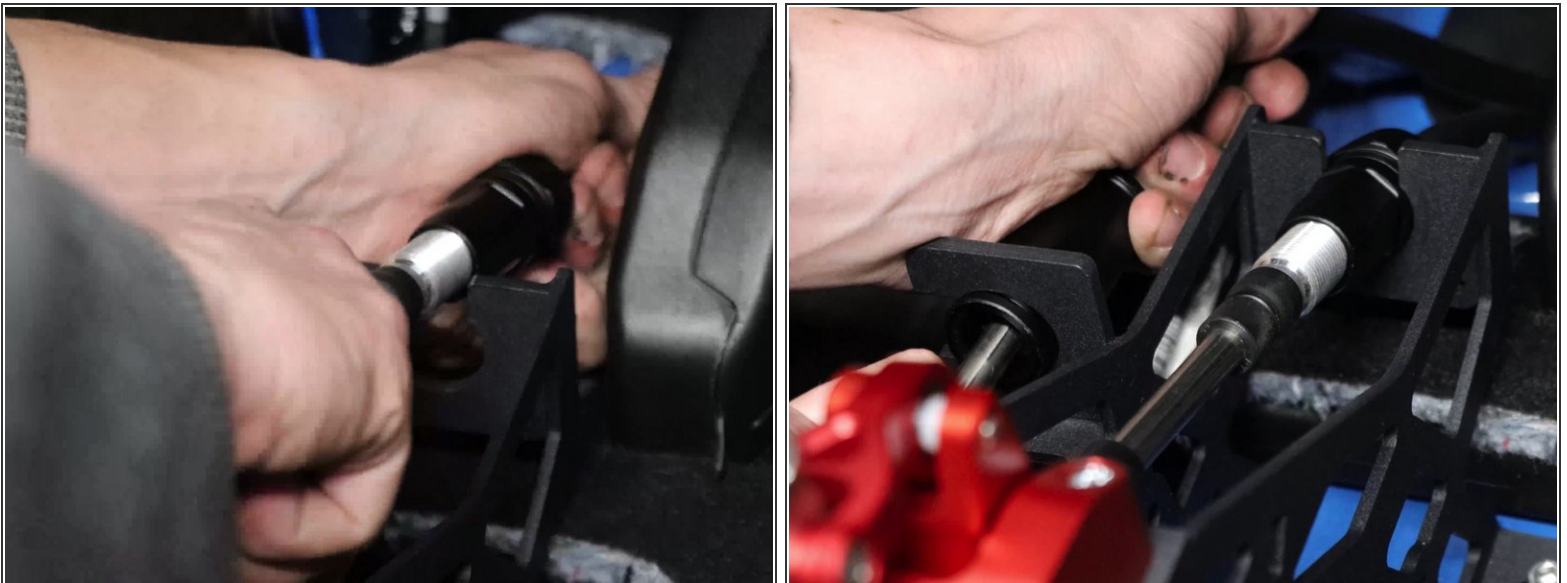
- On the transmission, insert the shifter cables through the shifter cable bracket. Use the OEM retaining C clips and lock them into place.
- Slide the shifter cable end links back on and install using the supplied cotter pins.

Step 39 — Install Shifter Cables



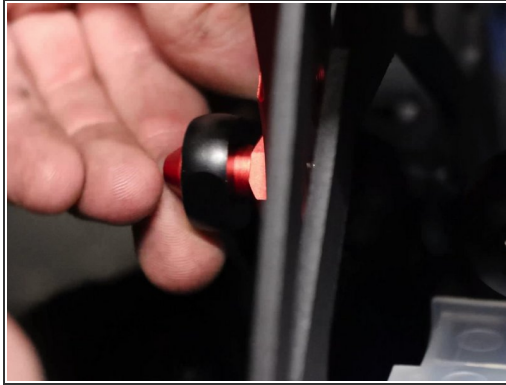
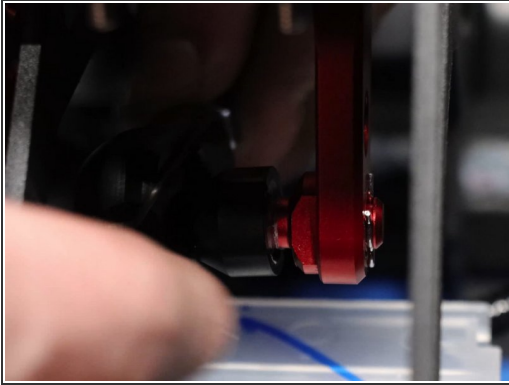
- Back inside of the car, you can now install the shifter.

Step 40 — Install Shifter Cables



- Insert the shifter cables back into the shifter.

Step 41 — Install Shifter Cables



- Attach the shifter cable end links to the shifter.

Step 42 — Install Shifter Cables



- Now install the shifter cable retaining spring clips.

Step 43 — Install Complete!



- Once the cables are connected you can now row through all of the gears, making sure everything feels good.
- The shifter cables are now installed so you'll have to put the car back together in the reverse order.
- Thanks for reading, enjoy!