



Hybrid Racing High-Flow E85 Fuel Pump

Use these steps as a guide to install the Hybrid Racing fuel pump into the 92-00 Honda Civic or 94-01 Integra.

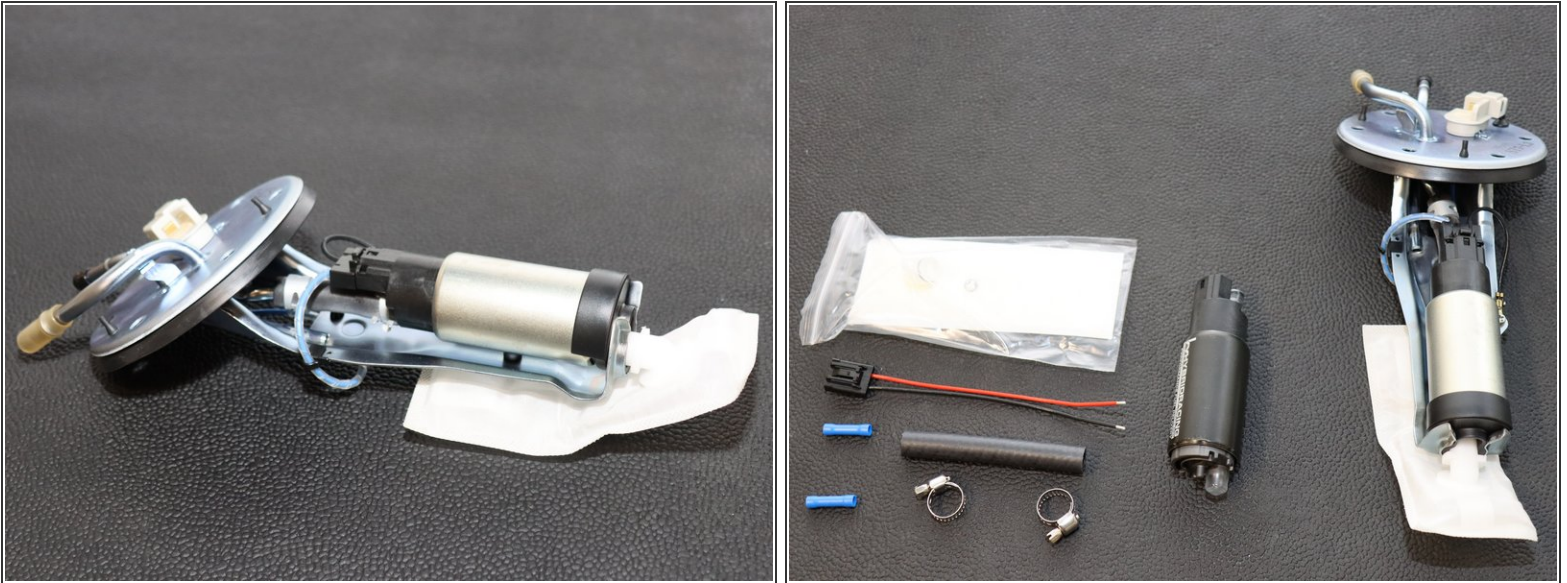
Written By: Hybrid Racing



INTRODUCTION

Use these steps as a guide to install the Hybrid Racing fuel pump into the 92-00 Honda Civic or 94-01 Integra.

Step 1 — Fuel Pump Parts



⚠ Fuel pumps use gasoline. Gasoline is extremely flammable and harmful to work with. Take all necessary precautions to ensure a safe installation. Work in a well-ventilated area and don't do this around an open flame.

- i** Disconnect your battery and wait 15 mins before removing the fuel pump from the car.
- To begin, you will need to remove the fuel pump cage from the tank of the car. Depending on the type of car, this process typically requires you to remove the rear lower seat, access cover and wiring harness. Then remove the fuel lines and unbolt the fuel pump cage and pull it upwards out of the tank.
- Our image represents a completely stock fuel pump assembly. This exact part comes from the 94-01 Integra DC2. The EG and EK fuel pump setups are very similar.
- Included in the Hybrid Racing fuel pump kit, you will receive a new fuel pump, along with a filter element, replacement hose, clamps and wire harness with crimps.
- i** You may NOT use all of the included parts. We include them in case your factory parts are old or damaged. If your wiring, hose and clamps are in good shape, you do NOT need to change them. Our fuel pump is 100% compatible with all of the factory Honda parts.

Step 2 — Pump Removal



- Remove the lower section of the fuel pump by sliding the rubber bushing out of the holder.

Step 3 — Pump Removal



- Disconnect the fuel pump by depressing the wire harness connector and pulling it outward.

Step 4 — Pump Removal



- Use a pair of pliers and loosen the hose clamps that hold the rubber hose to the cage assembly.

Step 5 — Pump Removal



- Once both clamps have been loosened, pull the pump assembly down and remove it from the cage.
- Remove the rubber line from the fuel pump assembly.

⚠ Inspect the rubber hose for damage or fatigue. If this item is old or in bad shape, replace it with the included hose.

Step 6 — Pump Removal



- Use a flat-tipped screw driver or pry tool and remove the metal retaining clip holding the pick-up filter in place.

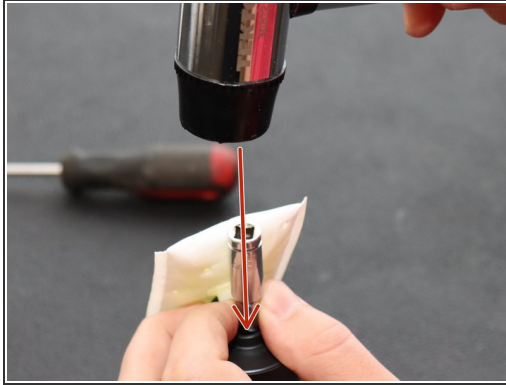
Step 7 — Fuel Pump Installation



- Install the OEM rubber bushing on the new Hybrid Racing fuel pump. Use the supplied pick-up filter and retaining ring as well.

 **Do not reuse the old parts.**

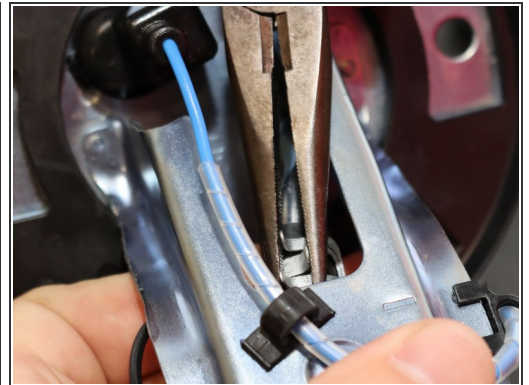
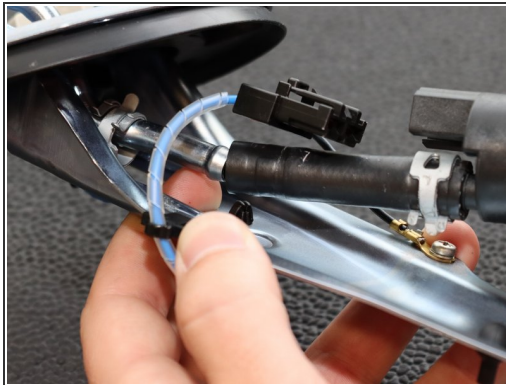
Step 8 — Fuel Pump Installation



- Use a small 6mm socket to hold the clip in place and tap it downward with a hammer to secure it.

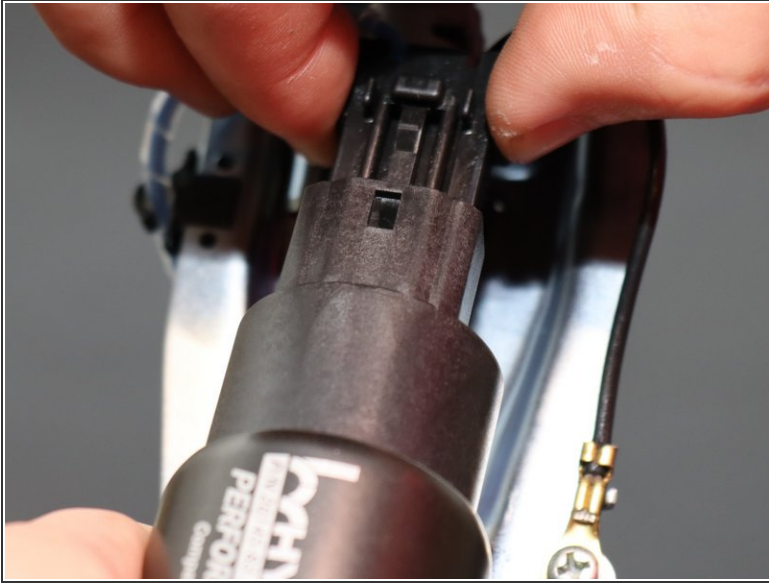
☑ If you can push it on with your hands, do that before using a hammer. Be careful not to break anything. Tap gently.

Step 9 — Fuel Pump Installation



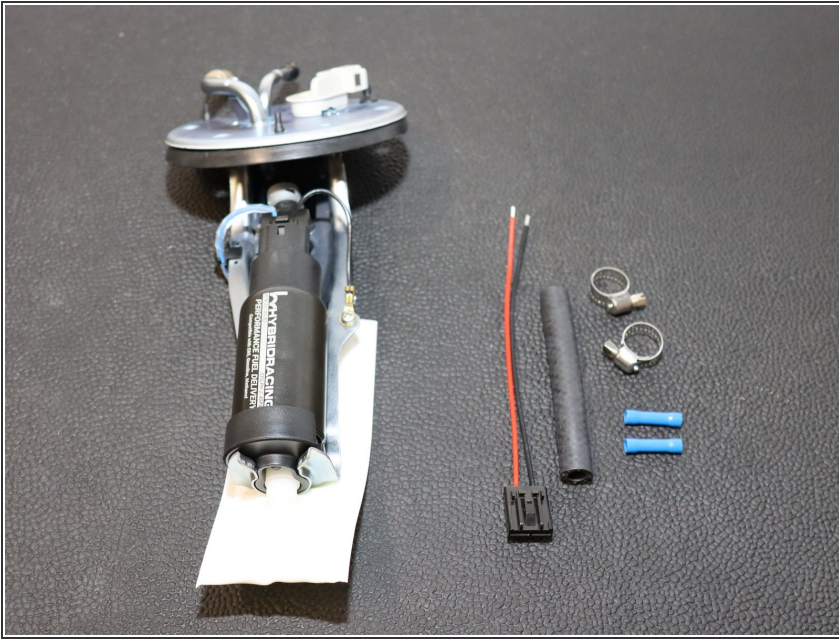
- Install the rubber hose on the new Hybrid Racing fuel pump. Be sure to use the included line and clamps if your hose is not in good shape.

Step 10 — Fuel Pump Installation



- Once the hose and clamps are in place, plug the fuel pump in to the OE harness.
- ☒ If your wiring is damaged, you can use the supplied connector and harness to replace it.
- Slide the lower portion of the pump back into the cage.

Step 11 — Install Complete!



- The fuel pump install is now complete.
- You may have some items left over, depending on your specific situation. This is normal and you do NOT need to use all of the parts unless you have to.
- ☑ Please contact us if you have questions or concerns about this install.
- Install the complete cage and pump assembly back into your car and turn the key on and check for leaks before cranking the engine.

⚠ Fuel pumps use gasoline. Gasoline is extremely flammable and harmful to work with. Take all necessary precautions to ensure a installation. Work in a well ventilated area and don't do this around an open flame.